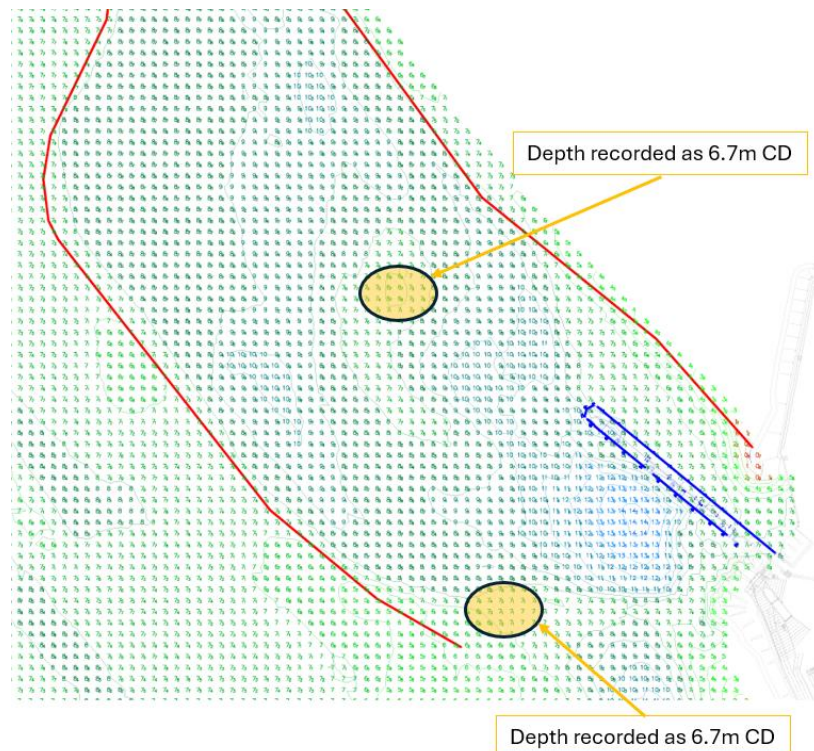


No 6 of 2026 | 9th April 2026

Maintained Depth Turning Basin

Mariners are advised that following a recent hydrographic survey of the approaches and berths to Loch Ryan Port, two charted areas within the turning basin are recorded less than the maintained depth of 7.5m CD, as indicated below.



Mariners are advised to navigate with caution.

Dredge operations to maintain the turning basin depth shall be undertaken as soon as practicable.

Issued on behalf of the Harbour Authority

Harbourmaster.lrp@stenaline.com