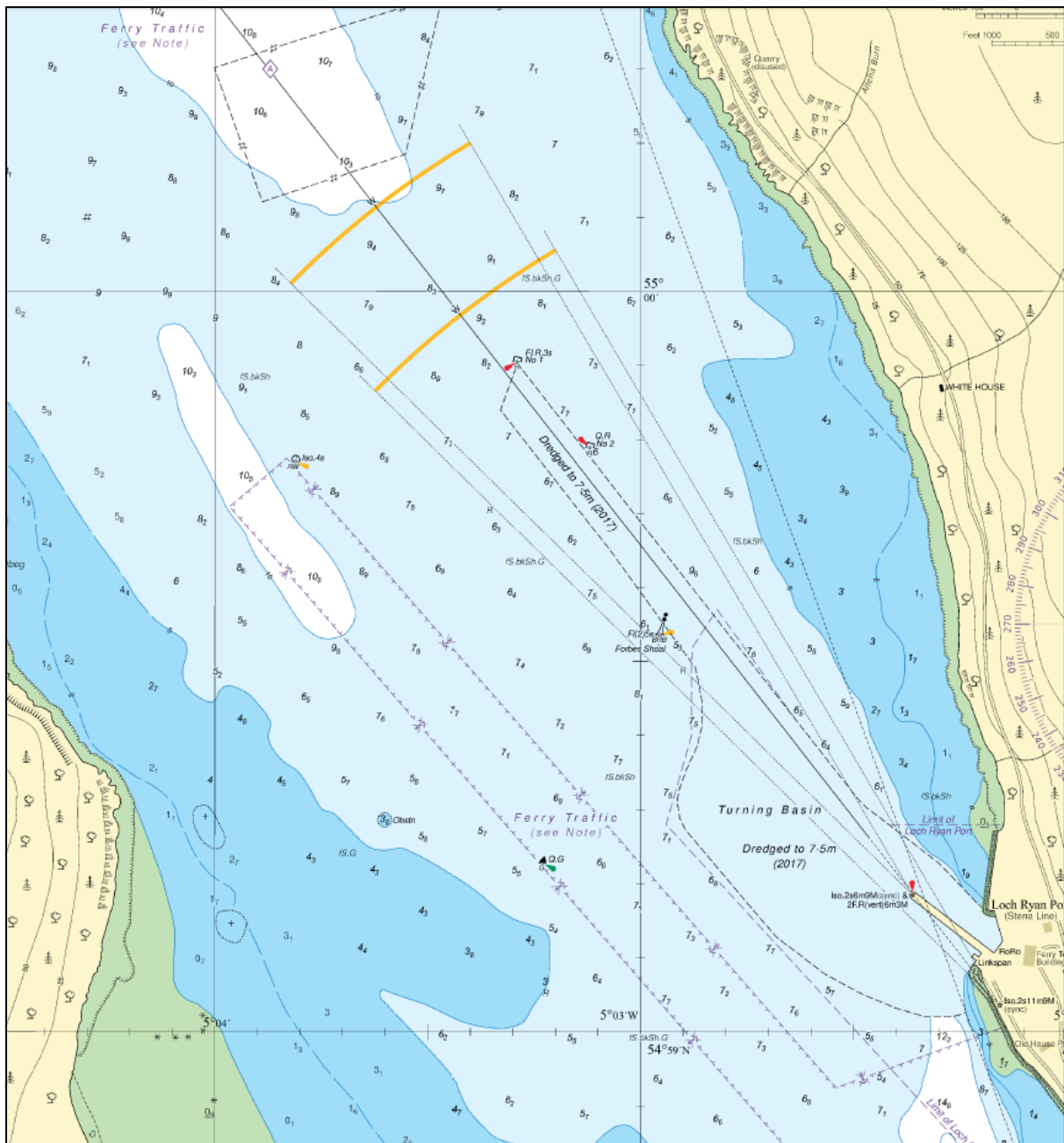


NSG No 04: NAVIGATION AIDS

1. Within Loch Ryan Port limits and approach channel, there are three navigation buoys, one end of pier light and two leading lights.
2. These are as follows and can be seen on the area of chart reproduced within this guideline:
 - 1) No. 1 Red Can Mark: FI.R3s
 - 2) No. 2 Red Can Mark: Q.R
 - 3) Isolated Danger Mark: FI(2)5s (located outside of Port Limits)
 - 4) End of Pier Lights: 2 F.R (vertical)
 - 5) Leading Lights of: 142°T/322°T
 - a. Front Leading Light: Iso 2s 9M
 - b. Rear Leading Light: Iso 2s 9M
3. It is the responsibility of the LPS Officer and Masters of vessels navigating within Loch Ryan Port limits and approach channel, to report to the Harbour Master or Deputy any deficiencies or defects as soon as is practical.
4. It is the responsibility of the Loch Ryan Port maintenance team to carry out monthly inspections and keep records of these inspections, identifying any defects that need to be rectified.
5. Loch Ryan Port personnel will complete the LATON online system.

NSG No 04: NAVIGATION AIDS



UKHO Copyright Licence HO 14206